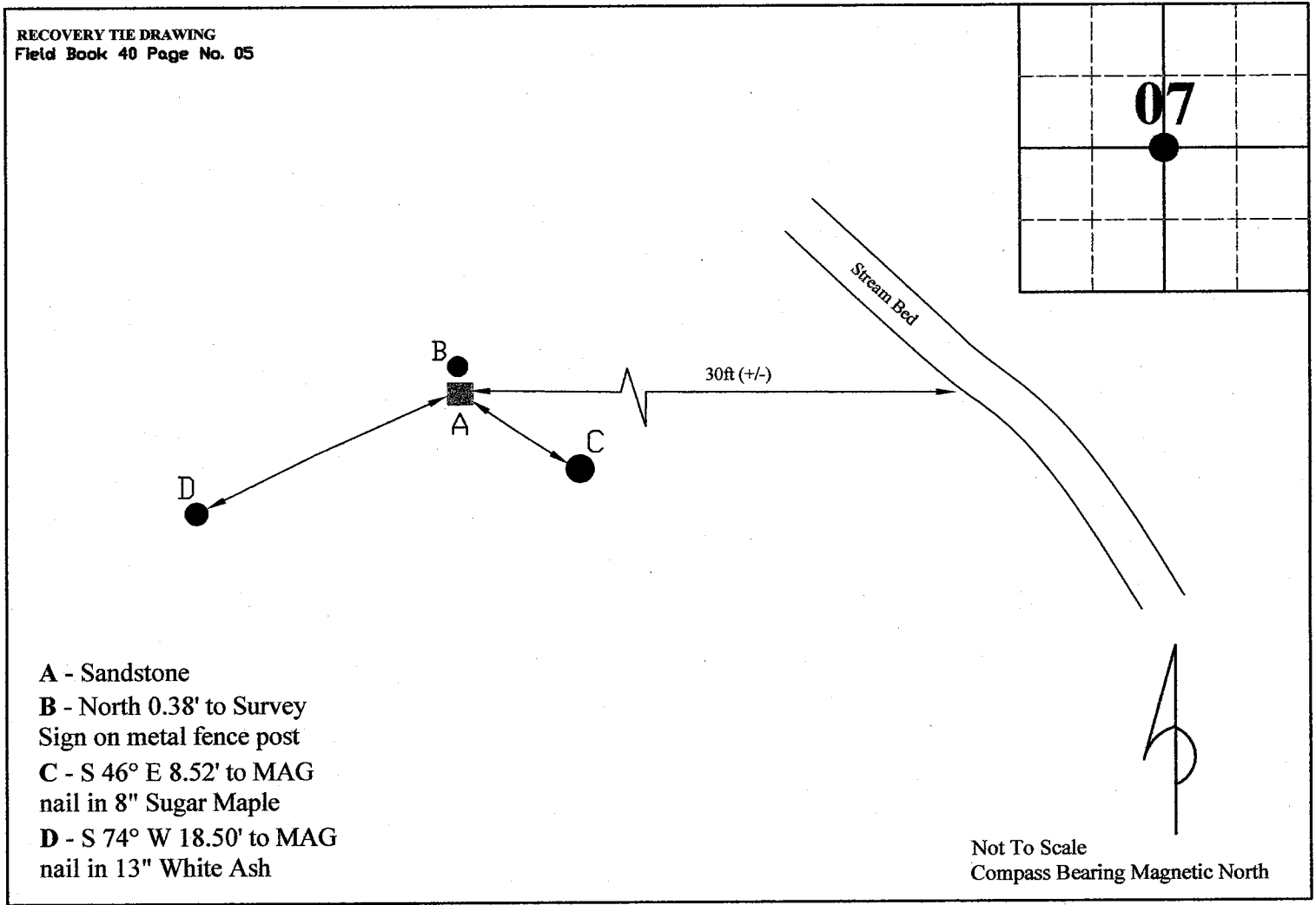


**MONUMENT RECORD**  
State of Indiana - County of Monroe

**Section: 7      Township: 8 North      Range: 1 East      Corner ID: SaCr C-07**

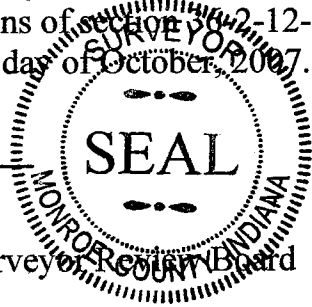
**Monument Description & Remarks:** Sandstone with "X", length 0.63ft, width 0.38ft, height 0.38ft. Survey Sign 4ft above ground at pt. B

**References On File:** Legal Survey Book 2 page 470 survey (1889), on file in Surveyor Office; Eric Lee Deckard survey, Moravec Boundary (2001), on file in Auditor Office and Surveyor Office



I, Kevin P. Enright, Monroe County Surveyor, hereby certify that this document was prepared under my direction in accordance with the provisions of section 2-12-11 of the Indiana Code, and the above data is given under my hand and seal this 4th day of October, 2007.

*Kevin P. Enright*



Administered by the Monroe County Surveyor Review Board

Date: 11-13-2007